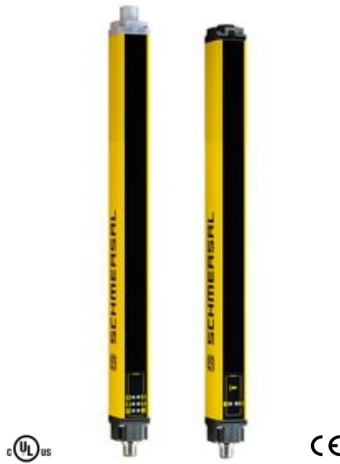
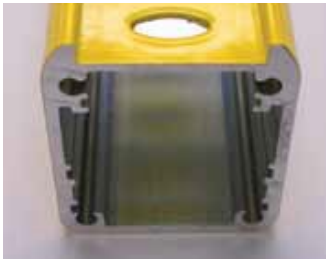


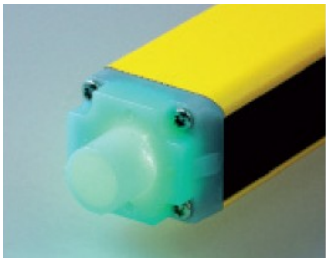
SLC440 Multifunctional Safety Light Curtains



Features



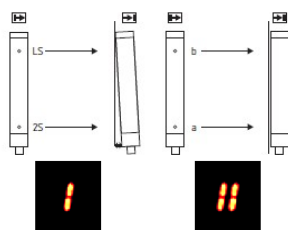
Rugged closed housing profile



Output status LED endcap



7 segment & LED display



Alignment aid display

Overview

Schmersal's SLC440 Series are Type 4 Safety Light Curtains that incorporate a full range of common and unique application functions which are completely configurable without the need of a special tool or software.

The SLC/ SLG 440 series offers numerous functions as standard features: fixed blanking, floating blanking, fixed blanking with movable edge region, double reset, contactor control (EDM), automatic mode, re-start mode, and beam coding. Set up is simplified as selection and configuration of these functions are made via a single push-button and the 7-segment display. After completion, the selections are stored in the system. This user-friendly method does not require separate software or costly set-up devices.

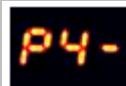
Installation of the emitter and receiver units is made easier with the integrated alignment aid. This function tests the first and last beams for alignment and displays the results on the 7-segment display. Once both are situated properly, the display can be changed over to show signal strength, to allow for fine tuning the alignment.

Operating status is clear and can be seen from a distance. The end cap of the receiver unit is molded from a semitransparent plastic that is illuminated by LED. It shows green for proper operation and red for a fault. Also, the 7-segment display which was so helpful in set up, now displays error codes and flashing signals to report specific faults and problems.

The SLC440 series features a one-piece extruded reinforced housing in a compact 28 mm x 33 mm rectangular profile. This housing profile has proven to be less susceptible to mechanical damage and misalignment from torsion or bending.

Safety light curtains SLC 440 are used for the protection of hazardous areas, and are available with resolutions of 14 or 30 mm and protection field heights between 170 and 1770 mm. The series is suited for use in safety circuits up to PLe (EN 13849) or SIL3 (IEC 61508).

Parameter Setting example



Contactor control not active
 ■ Press pushbutton 3x to reach Program 4
 ■ "P4-" indicates Program 4 (EDM) is inactive



Contactor control active
 ■ Push and hold pushbutton to change setting
 ■ "P4A" indicates Program 4 is active



Save new configuration
 ■ Press pushbutton 3x to reach the Save function
 ■ Push and hold pushbutton to save the configuration.

Contactor control function available
 ■ Reconnect SLC/SLG440 back to the safety system

Applications

- Power-driven machines
- Power presses for the metal and plastics industry
- Folding or brake presses
- Filter presses
- Punching machines
- Robot cells
- Welding booths
- Printing machines
- Injection molding
- Materials handling and storage technology
- Palletizers
- Packaging equipment

Available Literature



SLC440 Brochure, 12 pages

Ordering Details

SLC440-E/R①-②-01

- ① Protection Height: (mm)
 0170 0250 **0330** 0410
0490 0570 0650 0730
 0810 **0890** 0970 1050
 1130 **1210** 1290* 1370*
 1450* **1530*** 1610* 1690*
 1770* *only for 30 mm resolution
Bold heights are regularly stocked for 30mm resolution
- ② Resolution: (mm)
 14 with range: 0.3 m to 7 m
 30 with range: 0.3 m to 10 m

Mounting hardware included

Accessories

Connector cables

- KA-0804** 5 m cable for emitter
KA-0805 10 m cable for emitter
KA-0808 20 m cable for emitter
- KA-0904** 5 m cable for receiver
KA-0905 10 m cable for receiver
KA-0908 20 m cable for receiver
- KA-0974** Programming cable with pushbutton

Mounting

- MS-1100** Mounting kit
MS-1110 Center support
MSD5 Spacers

Deflection mirrors

- ULS-MLC-0200** 200 mm height
ULS-MLC-0350 350 mm height
ULS-MLC-0500 500 mm height
ULS-MLC-0650 650 mm height
ULS-MLC-0800 800 mm height
ULS-MLC-0950 950 mm height
ULS-MLC-1250 1250 mm height
ULS-MLC-1550 1550 mm height
ULS-MLC-1700 1700 mm height

Compatible Safety Controllers

- SRB-301MA** **SRB-301MC**
SRB-301ST-24 **SRB-301LCB**
SRB-504ST **SRB-211ST**
SRB-324ST **SRB-031MC**

Bold part numbers are regularly stocked

Contact

Schmersal USA
 660 White Plains Road
 Suite 160
 Tarrytown, NY 10591
 Tel: 914-347-4775
 Fax: 914-347-1567
 E-mail: salesusa@schmersal.com

Schmersal Canada
 15 Regan Road
 Unit # 3
 Brampton, ON L7A 1E3
 Tel: 905-495-7540
 Fax: 905-495-7543
 E-Mail: salescanada@schmersal.com